

CENS.com Digital Magazines

Aug. 15, 2015 Volume 04

Hardware



New Era for Hardware

**Chang Loon's Ratchet Wrench,
Bolt Cutter and Gear Wrench All
Built with Small Improvement for
Big Difference in Efficiency and
Functionality**



ProRatchet®

Taiwan Sourcing Service Provider

Guide to E-magazine

Content Sections

- CENS.com

Access to CENS.com for more information, industry news & reports.
- Online Product Index

Find quickly product categories of interest.
- Advertiser Index

Find easily suppliers of interest.
- Articles

Find here industry news, reports, and editorial articles.



For details on suppliers & products

Simply use hyperlink icons:

- Inquire Now

Click **Inquire Now** to safely, quickly connect to online inquiry form for the advertiser/supplier.
- Webpage

Click **Webpage** to connect to the introduction of the advertiser/supplier.

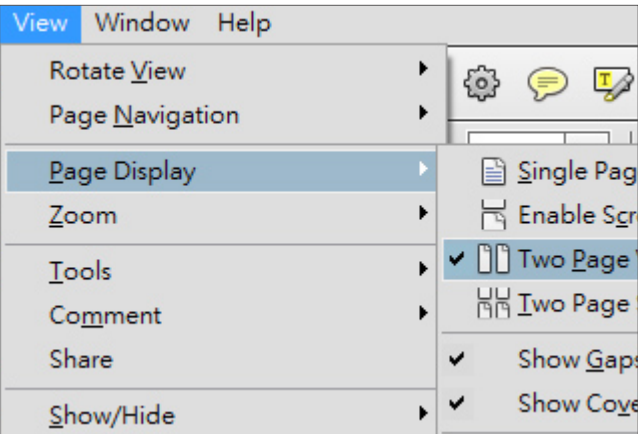


Some suppliers may have stopped advertising on CENS.com, but information in this E-magazine remains accurate as of its publish date.

Guide to PDF Reader

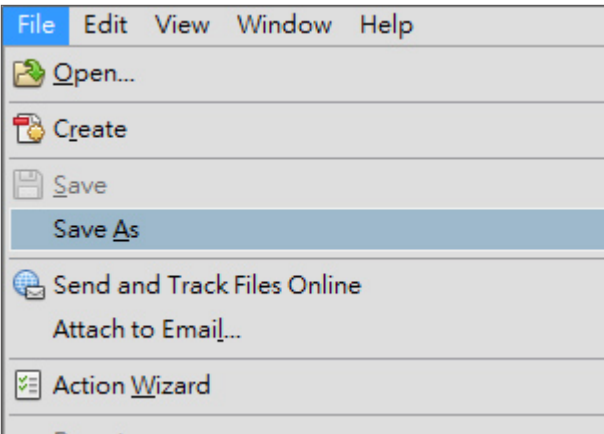
How to edit display settings

Select “View >> Page Display” to edit the way you like to read E-magazine.



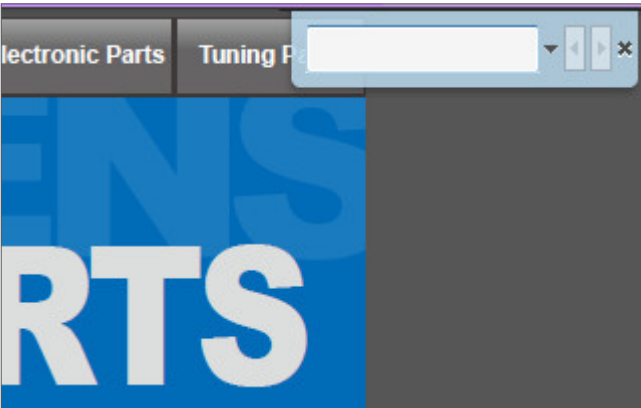
How to save a new copy of this E-magazine

Press “Shift + Ctrl + S” or select the “Save” option, and confirm your selection by choosing “Save a copy”.



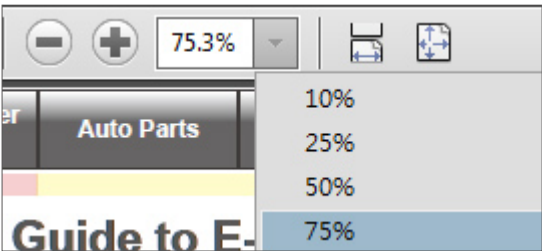
How to text search

Press “Ctrl + F” and enter keyword(s).
If no match is found, broaden the category of keyword(s). This search function works on exact match of keyword(s).

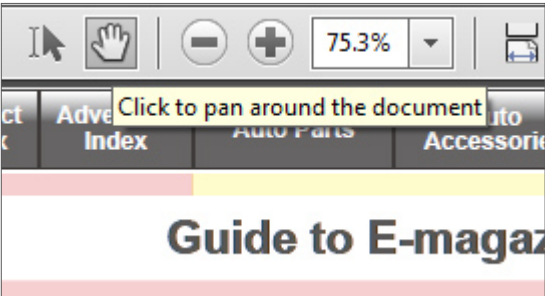


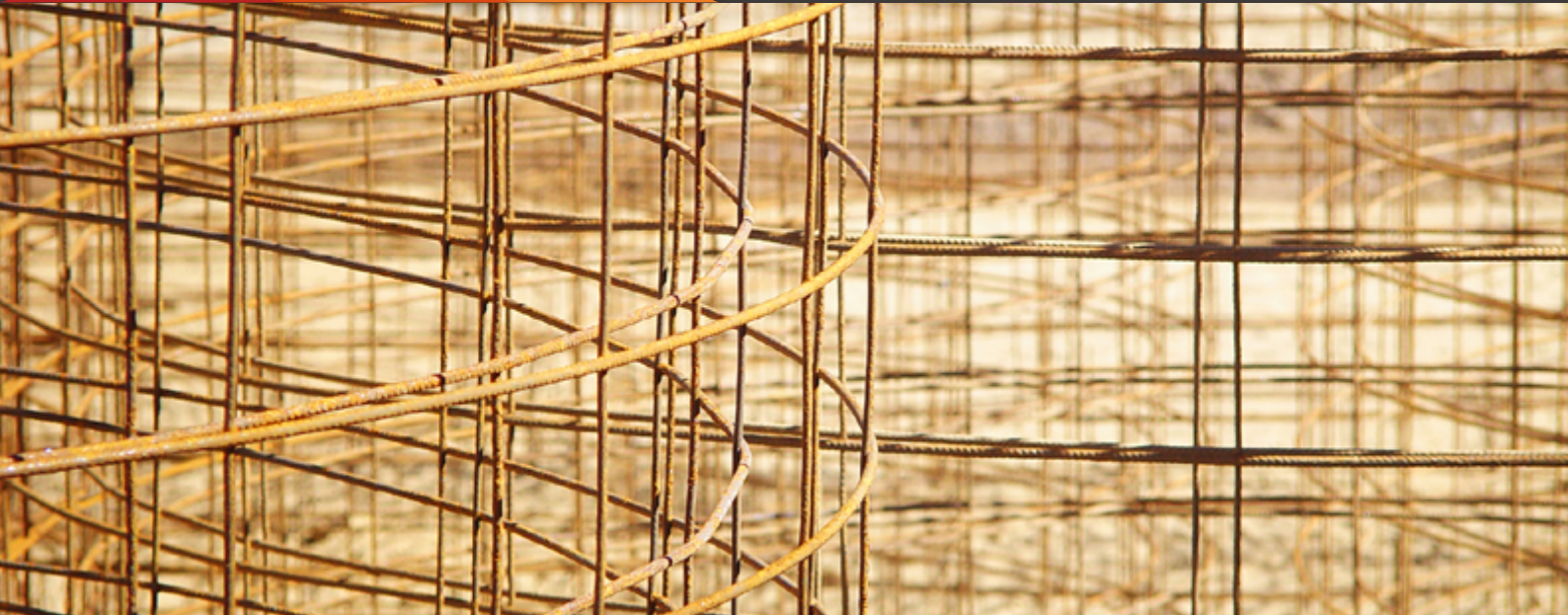
How to use zoom options and move around an enlarged page

Click either   icon to zoom in or out a page.



“Hand Tool” enables moving around an enlarged page for reading convenience.





Contents

■ Tools (Hand Tools and Hardware)

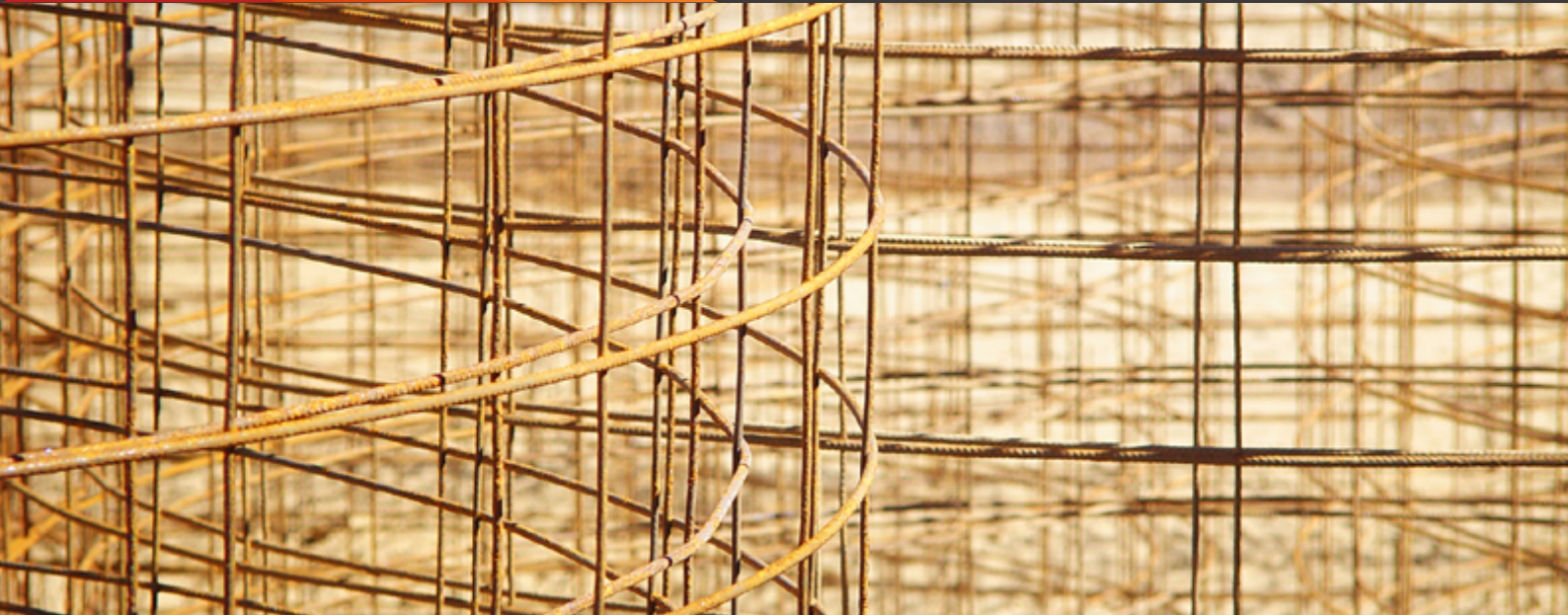
■ Gardening Tools & Accessories

■ Industrial Hardware (Including Items for Storage and Conveyance Equipment), Mechanical Hardware, Vehicular Hardware, and Tool-Related Products

■ Watercraft Safety Equipment (Deck Hardware, Towing Equipment, Winches, Jacks, etc.)

■ Bathroom Fittings (Including Washbasins, Bathtubs, Mirrors, and Toilets)

■ Furniture and Building Hardware (Locks Included)



■ Household Hardware (Household Products and Small Electrical Home Appliances Included)

■ Screws & Bolts



ITRI Develops Integrated Technologies for Security Surveillance

Technology enables mobile devices to monitor remote subjects

Red-Tom Lin, ITRI's manager engaged in technology marketing and cloud services, introduces the institute's latest technology for community and home security.

By STEVE CHUANG

Security has always been a background concern over the years, but has been catapulted to the foreground with the 911 terrorist destruction of the World Trade Center towers in New York, thus propelling a steadily-growing market for security-related products and services. Today, security monitoring products and services are literally built into residential, commercial and public buildings.

The Industrial Technology Research Institute (ITRI), Taiwan's R&D institute that engages in various projects, is developing integrated technologies for surveillance systems, aiming to boost the island's presence in this market.

Interviewed by CENS, Red-Tom Lin, the manager

of ITRI's Cloud Service Technology Center and Technology Marketing Dept., talked about the institute's latest technology achievement to enhance community security.

Integration of Smart Devices

Lin says that the ITRI is inspired by the growing popularity of mobile devices to integrate smart devices into surveillance systems to make community security controllable and interoperable online with smartphones.

ITRI's security system integration technology is based on Miracast, a peer-to-peer wireless standard created by the Wi-Fi Alliance, which allows users to share video and audio streaming

on mobile devices in real-time, according to Lin, who adds that the growing trend for multi-screen broadcasting also makes ITRI's idea of integrating smart devices into conventional surveillance systems marketable.

"By making smartphones and smart TVs a platform to access security services, such services are more compatible with the consumer segment than before to drive up sales of related products and services," says Lin. So, the ITRI focuses on development of system integration between smart devices and surveillance systems, which Lin believes can be effectively applied in communities and modern residential buildings to enhance not just home and individual security but also information exchange between residents.

According to Lin, ITRI's system integration technology links surveillance cameras indoors and outdoors via the Internet to indoor phones, smart TVs and mobile devices, enabling a user in the living room, for instance, to monitor in real-time pets in the backyard, car in the garage or children in other rooms through TV, or even answer a landline phone via a tablet PC.

By connecting community web servers to home web servers, the system, Lin says, can also be

used by community centers where surveillance and storage management systems are equipped to inform residents of mail delivery and visitors through mobile devices, which calls for additional packages of e-signatures and security connection.

System Structure

Lin elaborated on how a surveillance system works with ITRI's integration technology, saying that images and video captured by IP cameras are transmitted through the Intranet on RTP (Real-Time Transport Protocol) or RTSP (Real-Time Streaming Protocol) to NVR (network video recorder) and DVR (digital video recorder) systems to be stored, and then sent to community residents' smart devices via Wi-Fi networks.

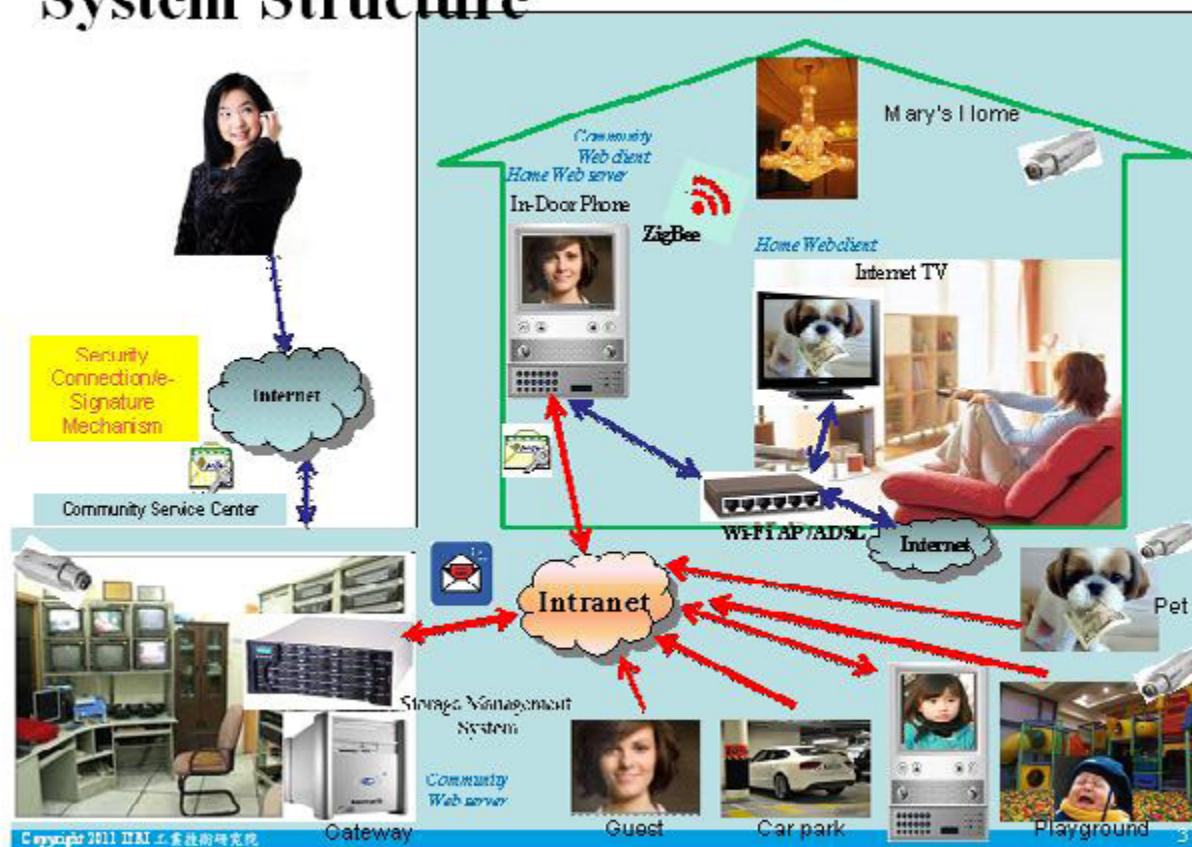
Also, in the integrated system, audio from access control intercoms and central control intercoms can be streamed on SIP (Session Initiation Protocol), which makes communication among community residents convenient.

As to home security, ITRI's technology links IP cameras and indoor phones to Internet TVs or tablet PCs via a Wi-Fi access point or ADSL (Asymmetric Digital Subscriber Line) modem, so

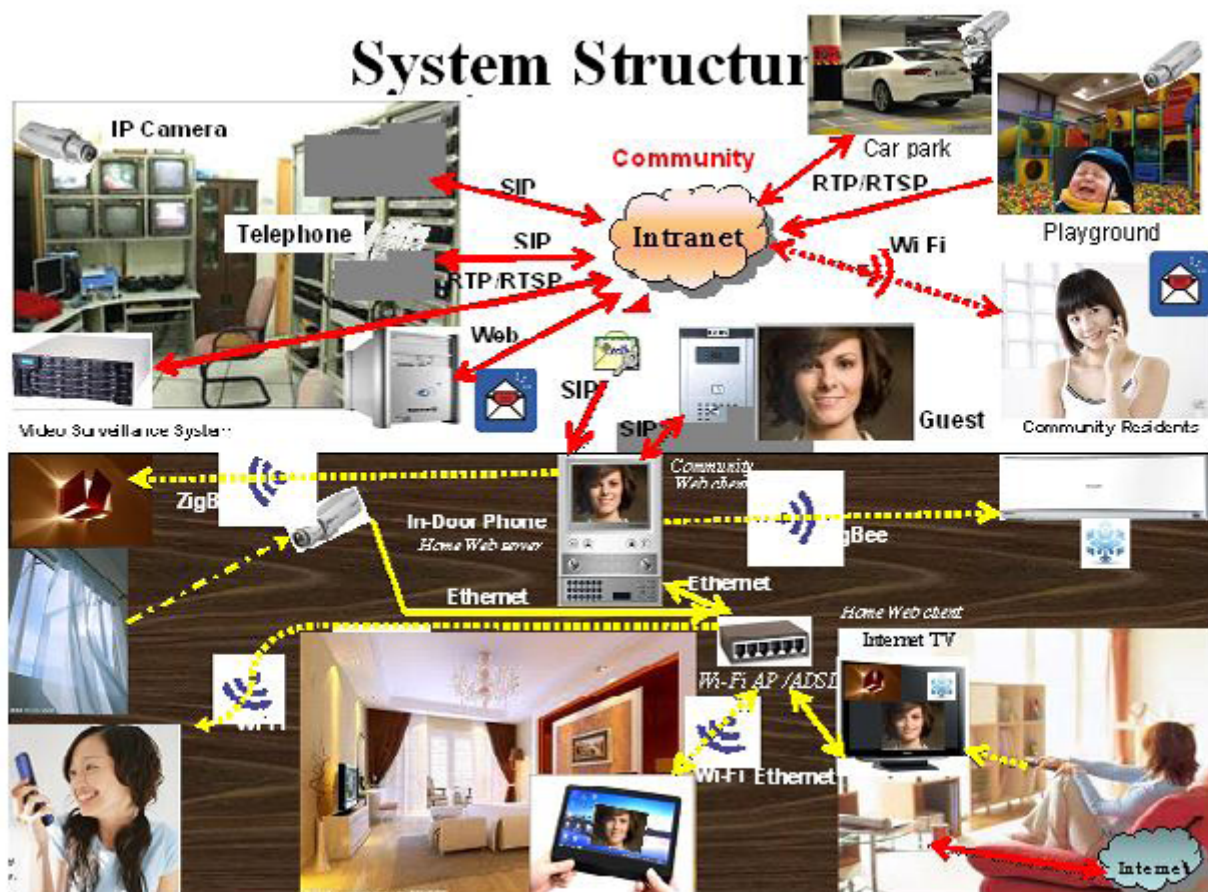


ITRI's south branch in the Southern Taiwan Innovation & Research Park in Tainan City.

System Structure



System Structure



users can watch shared images and talk to people shown on a screen directly. Furthermore, the technology can turn an indoor phone into a home web server wirelessly connected to household appliances, allowing remote controlling of lamps, projectors, air conditioners, and so forth.

“With the integration technology, we aim to achieve a smart connection through a surveillance security system, enabling computers, smartphones and watches to monitor security remotely, as well as looking forward to tapping this achievement to nourish the industry in southern Taiwan,” says Lin.

Derived from Another Cutting-edge Technology

Innovative and multi-applicable, ITRI’s surveillance system integration can be regarded as a derivation of another of its cutting-edge technology, Android motion sensing remote-

control, which, according to Lin, is the software enabling a smartphone to remotely control sound and motion of outdoor TV walls or gaming joystick. This technology has been commercialized by a Taiwanese company who unveiled it at the International Consumer Electronics Show 2013, which just rounded off on January 10 in Las Vegas.

“The technology can be used for commercial and educational purposes, and help Taiwanese manufacturers of set-top boxes, smartphones and smart TVs enhance value in products,” says Lin. [CENS](#)



IP cameras (photo by Fine's IP bullet camera) and smart devices are the core of ITRI's surveillance system integration technology.

Taiwan's Traditional Manufacturers Need Soft Power to Upgrade

One obstacle being inadequate investment in R&D by Taiwanese makers



Y.C. Dai, MIRDC's senior manager of the metal product R&D department, talks about development of Taiwan's traditional manufacturing industries.

By STEVE CHUANG

Soft power has been a buzzword in Taiwan, whose export-driven economy is gradually changing and needs sustainable development when cost cutting is no longer sufficient, and when knowledge is essential to stay ahead; and accordingly, traditional manufacturers are eagerly looking to upgrade into value-added production in the face of increasing competition from emerging economies.

To promote the latest technology-development white paper issued by the Ministry of Economic Affairs, the Taiwan Institute of Economic Research held a seminar in November 2012 and invited Y.C. Dai, a senior manager of the metal product R&D department of the Metal Industries Research & Development Centre (MIRDC), along with C.C. Lee, a sector chief of the Taiwan Design Center, and Red-Tom Lin, manager of the Technology Marketing Dept. of Industrial Technology Re-

search Institute (ITRI), to shed light on the current situation of traditional manufacturing and offer suggestions to the government to help with soft power enhancement.

Slow Development

Dai summed up the development of Taiwan's traditional manufacturing industries, and said that soft power is the ability to innovate products and services or other factors that enhance technological advancement, which can involve R&D, ICT (information and communication technology) application, branding, corporate operating models, latent incubation, supply-chain networks, organizational efficiency and so forth.

"After experiencing brisk economic growth driven by rapid development of local production-oriented and capital-intensive industries in the past decades, Taiwan needs to restructure its economy to maintain momentum," said Dai.

Dai pointed out that soft power, or multifactor productivity, has already contributed 43.5% to Taiwan's economic growth in the early 21st century to top corporate contributions in manpower and capital investment, according to statistics issued by the Directorate-General of Budget, Accounting and Statistics. He stressed that the island still has room to develop soft power to better build local

ductivity to economic growth.

Compared to Taiwan's 4.4% GDP growth against only 43% in multifactor productivity's contribution, Germany, Japan, and S. Korea, for instance, posted 0.9%, 1.2% and 3.8% economic growths, respectively, against soft power contribution rates of 66.7%, 100% and 73.7% during 2000-2010, said Dai, citing statistics from the Organization for Economic Cooperation and Development's structural analysis database (OCED STAN Database).

In terms of maturity of local corporate management, which helps to enhance productivity and can indicate soft power of a firm, Dai added, Taiwan's industries in fact have moderate development of soft power. According to WEF's Global Competitiveness Report, Taiwan ranked 13th in 2011 among 142 countries in terms of corporate maturity, falling one notch compared to 2008's, while emerging countries, including China, Malaysia and Brazil significantly advanced to 37th, 20th and 31st, respectively. Notable is that Taiwan dropped to the 16th place in corporate productivity, and plummeted to 22nd in international logistics, but remained atop the 146-nation rankings in industrial cluster development.

"About 98% of Taiwanese enterprises are small and medium-sized," said Dai, who blames lack of resources for the relatively modest development of soft power.

Structural Problems

Dai focused on some structural problems related to supply and demand in Taiwan's traditional manufacturing industries that hamper development of soft power and value-added production.

Firstly, Dai said, Taiwanese makers use too much material as intermediate input and mostly neglect the importance of inputs of services. According to OECD STAN Database, raw materials accounted for about 45% of overall intermediate input in production of other goods in Taiwan in the mid-2000s, when these proportions in Japan, Germany, the U.S. and the U.K. stood at only 24%, 18%, 18% and 16%, respectively. This weakness undermines added-value of Taiwan-made products, which was especially significant 2002 through 2008, when raw material shortages caused skyrocketing prices.



Taiwan Institute of Economic Research's seminar attracts many industry insiders, experts and college students.

industries, given that developed countries have even higher contribution rates of multifactor pro-

Dai stressed that global industrial development has shifted from traditional manufacturing economies to balancing production and services to enhance added-value of manufacturing industries through support from service providers. However, he said, most Taiwanese traditional manufacturers had only 15% of intermediate inputs being services in mid-2000s as shown by OECD STAN Database, hence failed to build positive links with service providers, except distributors and retailers. This situation hinders producers from enhancing added-value of products, though today 70% of Taiwan's GDP is generated by services.



Red-Tom Lin, manager of the Technology Marketing Dept. of ITRI, talks about the institute's technological achievements that help nurture soft power for traditional industries.

Meanwhile, Taiwanese traditional producers spend moderately on R&D. According to Dai, only 20% of total R&D spending by Taiwan's manufacturers a year is from traditional makers, who, according to MIRDC's surveys, typically pour NT\$2 out of every NT\$100 earned on average into R&D, compared up to NT\$7 by their counterparts in Ja-

pan, Germany and the U.S. Also notable is that local traditional makers in Taiwan apply fewer ICTs as intermediate inputs in production than those in other developed countries, despite the island's well-developed ICT industries.

Dai also listed other factors troubling Taiwanese traditional manufacturers to develop soft power and value-added products, including lacks of unique products and market-driven design concepts, slow development of new products, neglect of capital expenditure in R&D, poor technology integration capability for trial production, backward development of manufacturing processes and forming technologies compared to state-of-the-art ones in developed countries, low self-sufficiency in supply of key components, ineffective integration of cross-sector manufacturing, few logistic warehouses overseas, incapacity in building owned global distribution networks and modest branding and marketing.

Suggestions

Based on MIRDC's experience, Dai offers several suggestions to the government and enterprises in nurturing soft power and upgrading production.

Considering that Taiwan has 82 distinctive industrial clusters mostly in northern, central and southern regions, Dai said that the government should promote existing regional R&D centers to more than drive R&D momentum into local industries, but also link mutually to form value-added supply chains and develop different higher-end products according to industrial and regional characteristics.

For instance, one center in Taiwan's central county of Chiayi, which is noted for boutique farming, food-making, cosmetics, and green energy, has been working on horizontal and vertical integration of these industries in cooperation with several R&D bodies, aiming to establish cross-sector platforms for enhancing technology exchanges and latent incubation, as well as develop high value-added technologies and products, such as biotechnology and higher-end precision machinery, by tapping synergy.

To speed up development of traditional manufacturers' soft power, Dai suggests that regional R&D centers help manufacturers to apply technolo-



ITRI contributes considerably to Taiwan's faucet manufacturers in developing value-added technologies and products.

gies to enhance R&D capability, build long-term industry-academia partnerships to broaden use of applied technologies, and integrate ICTs and services into manufacturing to create new B-to-B business models.

Governmental Resource

Dai furthered that companies should actively take advantage of government's resources through applying for and carrying out TDRs (technology development programs) or SBIR (Small Business Innovation Research) programs in cooperation with local research institutes to develop new products and strengthen R&D capabilities.

The partnership between R&D bodies and manufacturers of faucets and bathroom fittings in Changhua, central Taiwan, is a striking example of soft power development, mentioned Dai. Dingfanpo, a small borough of Lukang Township in Changhua, has the highest density of faucet manufacturers in Taiwan, but most are small-sized, inept at technology integration and lack capabilities to develop innovative products and mechanisms to start trial production.

To solve the abovementioned problems, some research institutes help operators develop new rapid prototyping processes, as well as improve plastic injection molding, die casting, pressing and mass manufacturing capability to speed R&D process. Meanwhile, operators focus on developing and applying value-added technologies, such as integration of a digitally controlled and monitoring water supply system into faucets, drawing on cross-sector partnerships. The industry is also served by an information-exchanging platform and market information provided by R&D bodies to boost global presence and marketing skills.

So far the partnership have borne fruit, as R&D time from designing and shop drawing to mass production has been shortened by 30%, added-value of faucets raised by 10% thanks to use of newly developed processing techniques, and costs of product certification reduced by 50%, said Dai, who added that Taiwan's faucet industry has regained lost ground to enjoy higher profile globally.

Another ongoing soft power development program by Taiwan's R&D institutes focuses on the in-

dustry of bags and cases, which has been plagued by the lack of latent cultivation of fashion design concepts, capability of applying automated production technologies and prototyping and supply of value-added materials. So, with assistance from R&D bodies, the industry is introducing CAD (computer aided design)/CAM (computer aided manufacturing) technologies and new stitching, laser processing, printing and rapid prototyping techniques, as well as building a database of customs and fashion information, which is shared via cloud by operators.

Alliances

Dai also thinks that alliances initiated by industry-leading companies and upstream material suppliers are effective to upgrade traditional manufacturing industries.

For example, China Steel Corp., the largest steel-maker in Taiwan, has inaugurated several R&D alliances to develop cutting-edge materials, such as titanium and silicon steel sheets, to help fastener

makers, household appliances suppliers work out valued-added products, according to Dai.

Also, an alliance led by Taiwan’s largest yacht hardware supplier Aritex Products Co., Ltd. in co-operation with MIRDC focuses on development of electromechanical integrations for yachts, instead of traditional manufacturing techniques, to better tap the market trends for electronic and HID (human interface device) technologies that are increasingly demanded by yacht owners for more convenient boating and effective monitoring of yacht’s conditions. [CENS](#)

Major Industries (Industrial Clusters) in Taiwan by Region	
Region	Industry
Northern Taiwan	Ceramics, knitted fabrics, medical instrument, household appliances, textured yarn, automotives, printing, dyes, metal molds, etc.
Central Taiwan	Textile, sports equipment, furniture, household appliances, footwear, tires, hand tools, machine tools, bicycles and related parts, faucets and bathroom fittings, etc.
Southern Taiwan	Frozen meat and seafood, animal feed, glasses, leather, herbal medicine, petroleum, steel, fasteners, yachts, auto parts, plastic and rubber machines, etc.

Source: Metal Industries Research & Development Centre

WE ♥
MIT

Get Taiwan Export Express and find everything you need inside !



Scan the QR code with your smartphone to access the latest issue of TEE!



Chang Loon's 72-tooth gear wrench features each turn at surefire 5 degrees to attain effortless operation and torque accuracy.

Chang Loon Builds a Global Name as Top-end Wrench Maker by Enhancing Value

Strong R&D and better products bring success to the company

Compiled by STEVE CHUANG

Chang Loon Industrial Co., Ltd. believes that the development of wrenches has not yet reached its apex, despite their evolution over hundreds of years of use, and has constantly worked to add more value to its wrenches ever since its establishment in 1978.

The company has been developing and producing hand tools for almost 30 years, and is today one of the top makers of its kind on the island. Starting out in business as an OEM (original equipment manufacturing) producer, the company has accumulated a rich store of metalworking know-how and claims to be Taiwan's largest exporter of wrenches.

A single-minded focus on quality improvement, with a constant expenditure of time and money on improving production capability and introducing advanced inspection techniques and equipment to keep the defect rate to a minimum, has contributed to Chang Loon's success. With products that exceed international standards such as ANSI and DIN in terms of durability and torque, the company has built a strong image among international buyers.

Practical R&D

What really sets the company apart from its Taiwanese counterparts is its dedication to enhancing the value of seemingly mundane wrenches through extensive R&D. In developing a new product, the firm always makes sure

that it truly meets the needs of users. Each manager and supervisor takes an active part in every R&D decision to assure that it is properly carried out in line with the latest information and market trends.

Besides, the company's tests of newly-developed hand tools are based on user feedback and real experiences; rough edges that are discovered in actual use are repeatedly smoothed out until the new tools are perfect and ready for launch. This process may be costly, the company says, but it gains the respect and trust of clients.

Chang Loon's constant fine-tuning process makes sure that its ratchet wrenches are function-oriented. All of the wrenches are made of high-grade

chrome vanadium, and are hot drop-forged and heat-treated for prolonged life and a good appearance. A built-in, precise 72-tooth ratchet mechanism that took a great deal of time and resources to develop enables the wrenches to outperform competing models.

With the improved ratchet mechanism, each small turn of the wrench moves precisely through five degrees, allowing users to work in confined spaces and making the wrench more efficient and energy-saving. The company claims that its ratchet wrenches are perfect for auto repair, plumbing, and machine maintenance. Their sophisticated structural design and extremely precise tolerance help make these wrenches extremely practical.

Value Enhancement

Chang Loon is also known for providing another surefire solution for value enhancement: packaging. According to Chang, the company is inspired by new trends in different fields, including fashion and stationery, to design eye-catching, practical packaging. This has proven successful in increasing the marketability of products on the shelves of retail stores and wholesalers.

The company keeps its eye on the growing global concern for environmental protection, and is designing materials-efficient packaging made of reprocessed corrugated paper without any ecologically harmful materials. This packaging is especially popular with European buyers.

In addition to offering innovative design and eye-catching packaging, Chang Loon has also taken steps to differentiate its hand tools. For example, the heads of its ratchet wrenches are thinner and lighter than those of competing models, making them readily recognizable. Another patented design that is incorporated into the ratchet wrenches is a colored ring embossed on the head that clearly shows the size of the wrench in Imperial or metric units.

Chang Loon attributes its solid reputation in Europe, Southeast Asia, Latin America, Canada, and the United States to persistent hard work on R&D. The company considers devotion to R&D as its bread and butter, and its only route to survival in the increasingly competitive and challenging market.



CHANG LOON INDUSTRIAL CO., LTD.

349 Maming Rd., Shioushuei Township,
Changhua County, Taiwan 504
Tel: 886-4-768-8568
Fax: 886-4-768-8528
E-Mail: proratchet@chltool.com
<http://www.chltool.com>



Chang Loon supplies a variety of combination and ratchet wrenches that meet DIN standards.



Colored rings embedded in the heads are a successful design of Chang Loon's ProRatchet ratchet box-end wrenches



Tools (Hand Tools and Hardware)

■ Recommended Advertisers

CHANG LOON INDUSTRIAL CO., LTD.

HOMEease INDUSTRIAL CO., LTD.

PEACEFUL THRIVING ENTERPRISE CO., LTD.

TSAI CHUN LINE INDUSTRY CO., LTD.

CHANG LOON INDUSTRIAL CO., LTD. / Bolt Cutter, Cutter, Gear Wrench, Pro Gear Wrench, 72-teeth Ratcheting Combination

Chang Loon

ProRatchet®

PRECISE, ERGONOMICS & DESIGN

NEW

75° double box end
reversible ratchet
wrench / RPGD75



75° angle design, not
afraid of small spaces.

PATENT

Stop Ring reversible
ratchet wrench / RPG-SR
SIZE: 6mm~26mm (1/4"~1")



STOP-RING design prevents the
wrench from falling over the nut.

PATENT

Spline reversible
ratchet wrench / RPGU



PATENT

Magnet Stop Ring
reversible ratchet
wrench / RPG-M

NEW

Extra long double flexible
& reversible ratchet
wrench / FRPGDLU

NEW

Flexible with
lock ratchet
wrench / FPG-KK



NEW

Reversible
ratchet
wrench / RPG

RPG-M



Strong magnetic
ratchet top.



The pivoting section is unpainted,
enabling easy operation.

Uniquely-designed handle with
double-color grip is soft,
ergonomic, anti-slip, thus
superior to counterparts.
Rubber grip resists
corrosion or breakdown when
oil-stained.

HIGH TENSILE STRENGTH BOLT CUTTER

- Made of chrome vanadium steel or chrome molybdenum steel, drop-forged.
- Serrated cutting edges are heat-treated to easily and firmly grip bolts, saving labor.
- The pivoting section is not painted, enabling users to easily handle this unit without adjustment before and after use.
- Uses medium carbon steel bolts that have 8.8-grade strength.
- Thick, ergonomic handgrip features an extended life.
- Meets or exceeds DIN, ANSI specifications.



Chang Loon



CHANG LOON INDUSTRIAL CO., LTD.

No.349, Maming Rd., Hsiushui Hsiang,
Changhua Hsien, Taiwan 504
TEL:886-4-768-8568 FAX:886-4-768-8528
E-Mail:proratchet@chltool.com
http://www.chltool.com

72 teeth





Good design.
Good quality.
Homeease supplies
the overall quality,
from design to
finished glue guns!
We are good because
we stick to the Basics!

**HOMEEASE INDUSTRIAL CO.,LTD.**

423, Section 2, Chung Shan Road, Shuishang Hsiang,
Chiayi Hsien, 60852, Taiwan

T:+886 5 268-8966

F:+886 5 268-6876

W:www.homeease.com.tw

E:homeease@homeease.com.tw





SINCE 1983

Electricians' Supplies for Retail, Wholesale and Tradesmen

Suitable for E-scooters, cars, hybrid vehicles, and households

•Multi-functional Auto Tester •AC/DC High Voltage Tester •Detectors for DIYer
•Ultrasonic Distance Meter •Thermometer/ Hygrometer

7340 Multifunctional Voltage Tester

Measuring of DC/AC from 6~1000v DC/ 24~1000V AC
CAT IV 1000V, IP65. EN 61243-3 approval.



2021 Pin Type Moisture Meter

Measuring range:0~60%



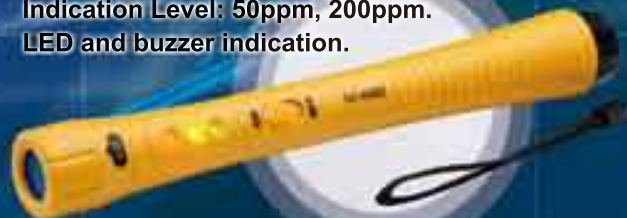
4102 Continuity Tester

0~100K Ω , maximum
voltage $\leq 400V$
LED & buzzer indication.



6602 CO Detector

Indication Level: 50ppm, 200ppm.
LED and buzzer indication.



ISO9001: 2008

PEACEFUL THRIVING ENTERPRISE CO., LTD.

<http://www.peaceful-tester.com>

No. 66, Lane 102, Zhangshui Rd., Sec. 2, Xiushui
Township, Changhua County, Taiwan 50441

Tel: 886-4-768-1199 Fax: 886-4-768-2299

<http://www.peaceful-tester.com>

E-mail: diyester@peaceful.com.tw



Making You the Slickest Operator in the Line

Wide-ranging vacuum grease guns and grease cartridges

可顯示存量的視窗
Grease-level
viewing window



V-161

Vacuum grease guns



V-400

- 專利改良結構，真空式推進，不易漏油
Revolutionary, patented structure for vacuum thrust operation with minimal leakage
- 可當矽膠槍使用
Doubles as caulking gun

Grease cartridges

免螺絲鎖緊，可自行填充，
適用市面上任何油槍
Installed without screws,
refillable and universally compatible



G-430

G-420

G-410

G-406



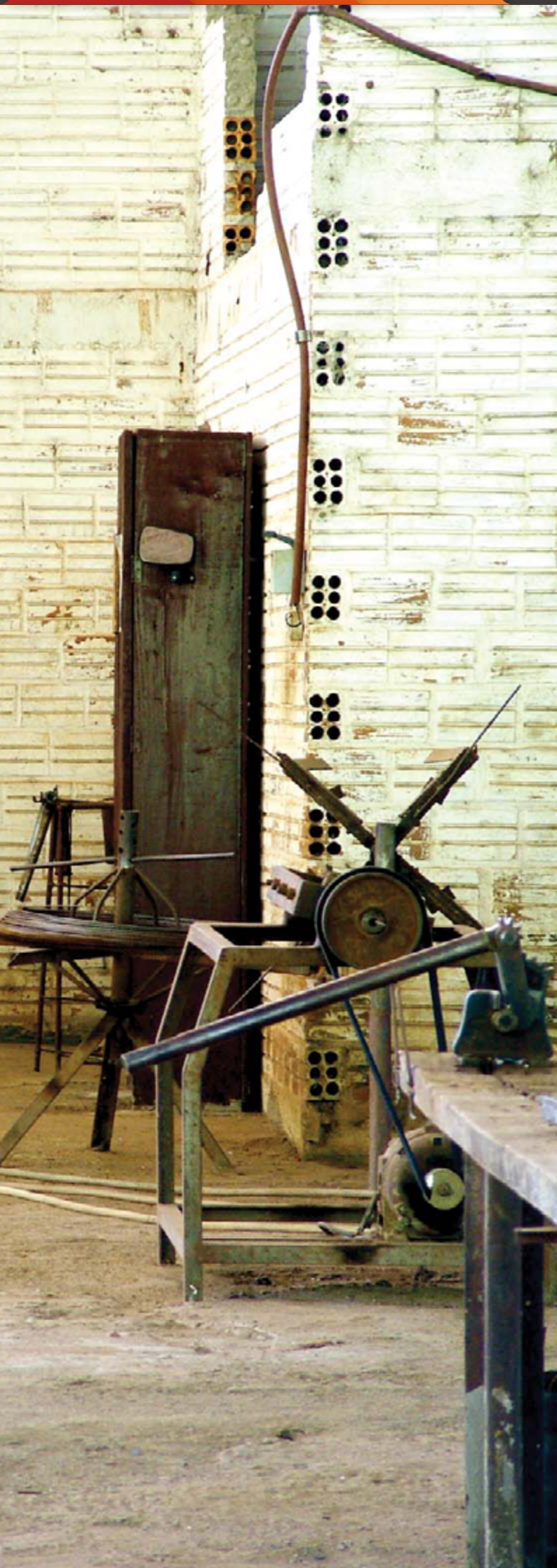
蔡春聯工業股份有限公司
Tsai Chun Line Industry Co., Ltd.

43252 台中市大肚區自由路90-1號

No. 90-1, Ziyou Rd., Dadu Dist., Taichung City, Taiwan 43252

Tel: 886-4-2698-0419 Fax: 886-4-2698-0417

E-mail: clftsai@ms38.hinet.net <http://www.clf-greasegun.com>



Gardening Tools & Accessories

■ Recommended Advertisers

[JIIN HAUR INDUSTRIAL CO., LTD](#)

[WISE CENTER PRECISION APPLIANCE CO., LTD.](#)

THE BEST KNIFE SHARPENER W/ SUPER POWERFUL SUCITON PAD



Used with no drill and nails. Never destroy the wall. Never damaged by put in a water. Suit for flat surface w/varnish surface. Reusable stone for grinding blade.



JH-016D

CBAR PRODUCTS excels at designing and manufacturing high quality, fashionable, durable and easily operated products.

CBAR PRODUCTS—JIIN HAUR INDUSTRIAL CO., LTD

No. 133 Chiukang Lane, Lukang Town, Changhua Hsien, Taiwan 505

tel +886 4 777 3339

fax +886 4 778 8129

web www.jiinhaur.com.tw

e-mail jiinhaur@jiinhaur.com.tw



JIIN HAUR INDUSTRIAL CO., LTD. / Professional Pruning Shears, Garden Tools, Pruning Shears, Flower Shears, Cordless Screwdriver

SUPER POWERFUL SUCTION PAD

- NO DRILL
- WATERPROOF
- FIRM SUCTION POWER AND REUSEABLE



HOOK HANGER



SHOWER NOOZLE SET



SECURE CABINET LATCH



MULTIFUNCTION RACK/HOOK



TOOLS HOLDER



TOOTHBRUSH HOLDER



CORNER SHELF



SOAP PLATE



MULTIFUNCTION HANGER/MIRROR



CBAR

CBAR PRODUCTS

JIIN HAUR INDUSTRIAL CO., LTD

No. 133 Chiukang Lane, Lukang Town, Changhua County, Taiwan 50545

tel +886 4 777 3339 fax +886 4 778 8129

web www.jiinhaur.com.tw e-mail jiinhaur@jiinhaur.com.tw

Please contact us for more informations and ask for the catalogue.





wiseya



Wise Center Industrial Group Inc.

Power Shears, Pruners, garden loppers, shears, cutters

Since its foundation in 1991 in Taichung County, central Taiwan, Wise Center Industrial Group Inc. has been dedicated to producing garden tools on the OEM and ODM basis.

Concentrating on garden cutting tools, Wise Center mainly supplies lopping shears, hedge shears, pruners, grass shears, tree pole pruners and saws and PVC pipe cutters. Also, conventional and foldable ladders and sprinklers, rakes and related garden accessories are also buyable in its current category.

In line with the growing trends of easy-to-use, lightweight and female-friendly garden tools, the company has also achieved an excellent balance between weight and durability in its products. All of its garden cutting tools are finished with bright surface and designed with improved structure for better leverages. Also featuring stylish exterior design and comfortable grips, the company's garden tools prove popular in Europe and North America.

WISE CENTER PRECISION APPLIANCE CO., LTD.

No.18, Wei 6 Road, Chung Kang EPZ.,
Tsao Nan Li, Wu Chi Dist, Taichung City, Taiwan
Tel: 886-4-2657-0580
Fax: 886-4-2657-0560





Industrial Hardware (Including Items for Storage and Conveyance Equipment), Mechanical Hardware, Vehicular Hardware, and Tool- Related Products

■ Recommended Advertisers

DELTA PLASTICS CO., LTD.

ELEM TECHNOLOGY CO., LTD.

GREAT BEAR ENTERPRISE CORPORATION

JAAN HUEI INDUSTRIAL CO., LTD.

LEADRANK CO., LTD.

NAN DEE PRECISION CO., LTD.

SHOWFOU ELECTRIC MACHINE CO., LTD.

DELTA PLASTICS CO., LTD. / Plastic Molds, Plastic Injection Molding, Mold, Plastic Injection Assembly, Molds

塑膠射出 · 一貫作業**plastic Injection Molding
Integrated Operation****Quality System:**

ISO-90001 ISO14000

QC080000 UL-746

TS-16949

- 工業零件 *Industrial Parts*
- 電腦零件 *Computer Parts*
- 家用品零件 *Houseware Parts*
- 汽車零件 *Auto Parts*
- 淨水器零件 *Water Purifier*



欣晟塑膠有限公司
Delta Plastics Co., Ltd.

台灣新北市土城區工業區民生街13號
No.13, Min-Shen St., Tu Chen Dist., New Taipei City, Taiwan
Tel: +886-2-22683625
Fax: +886-2-22681630
Email: delta@fongchen.com
http://www.fongchen.com

泓晟塑膠科技(蘇州)有限公司
Fong Chen Plastic Technology Ind.
(Suzhou) Co., Ltd.

中國江蘇省蘇州市吳江經濟開發區雲梨路458號 215217
No.458, Yunli Road, Wujiang Economy Development Zone,
Suzhou, Jiangsu 215217, China
Tel: +86-512-63332689
Fax: +86-512-63332686
Email: fongchen@fongchen.com

泓晟塑膠科技(蘇州)有限公司
FONG CHEN PLASTIC TECHNOLOGY (SUZHOU) CO., LTD.

專業製造各類精密電子、光學、機械及五金零件

Specialized Manufacturer of Wide
Ranging Precision Parts
Electronic, optical,
mechanical and
hardware parts

歡迎OEM及ODM！

OEM & ODM orders welcome!



EL
ISO 9001

毅聯科技有限公司 ELEM TECHNOLOGY CO., LTD.

彰化市大竹里彰南路2段262巷10號

No. 10, Lane 262, Zhagnan Rd., Sec. 2, Dazhu Borough, Changhua City, Changhua County, Taiwan

Tel: 886-4-732-4859, 737-3069 Fax: 886-4-737-3611

E-mail: elem.tw@msa.hinet.net http://www.elemtw.com.tw

GREAT BEAR ENTERPRISE CORPORATION / Metal Forming, Screws, Pin, Electronic Screw, Quick Release Pin, T-nut and Pin

Great Bear
Since 1961**Great Bear**

3F, No. 247, Chang An West Road, Taipei, Taiwan
 Tel: 886-2-2555-4478 Fax: 886-2-2558-7891
 E-mail: gbec@ms12.hinet.net
 http://www.great-bear.com.tw

Metal-Working Works

Mechanical, Electronic & Hydraulic parts
 Automobile screws, Assembled parts, Pins

OEM & SUBCONTRACTING

Forging/Forming/Casting Investment
 CNC composite machining/Sintering



JAAN HUEI INDUSTRIAL CO., LTD. / Pump, High Quality Chemical Piston Pump, High Flow, Adblue Pump

High-Quality Hand-Operated Chemical Transfer Pumps

JAAN HUEI INDUSTRIAL CO., LTD. is dedicated in "High Flow Pumps, Ad Blue pump, Piston Pump, Lever Action Drum Pump, High Quality Chemical Piston Pump, Plastic Rotary Pump, Drum Pumps, Water Pumps" with operations in Taiwan. Our main markets are North America, Germany, and Japan.



RP32



RP32H



RP32-1H



RP-32R



RP-20P/RP20PT



RP-90P/RP90PT



RP-90R



RP-150P/RP150PT



RP-150R



JH308 JH309 JH32-0103



P490S



T490S



RP-90A



H304ST/H316ST



RP50P

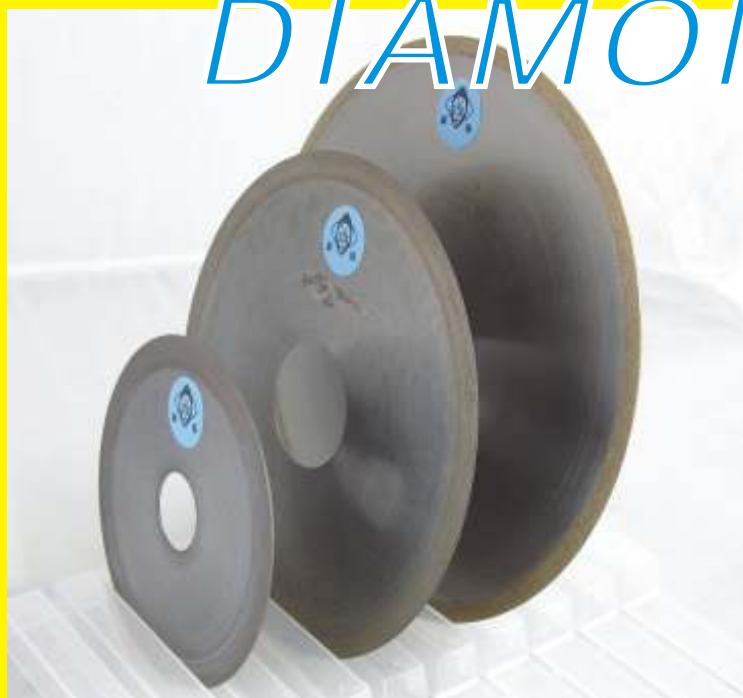
JING

Jaan Huei Industrial Co., Ltd.

328 Keliao Rd., Longjin Borough, Longjing Dist., Taichung City, Taiwan
Tel: 886-4-2639-8999 Fax: 886-4-26395799 E-mail: jaan.huei@msa.hinet.net
<http://www.hand-pump.com.tw> <http://www.cens.com/jaan-huei>



DIAMOND DISC



Leadrank Co., Ltd. was established in 1990, is a professional manufacturer of diamond grinding wheel, Our business purpose "Quality is the fundamental foundation of the service is to ensure development." More to the "preferential prices, excellent quality, excellent service" concept and implementing the company.

The company in addition to production and sales of these products, the other based on customer needs and provide all kinds of product information and advisory services. Company based on equality and mutual benefit, reliable quality, timely delivery and reasonable prices to serve our customers throughout, and we welcome the economic and technical cooperation. We will spare no effort to meet your needs. Select "Li together," you and I to create a win-win situation.



www.leadrank.com.tw
LEADRANK CO., LTD.

No.221, Yuqing Rd., Miaoli City, Miaoli County, Taiwan 360
 TEL:886-37-351168
 FAX:886-37-351525
 E-mail:leadrank@gmail.com



NAN DEE PRECISION GROUP is a professional CNC machining, milling and turned parts manufacturer.

Over 30 years experience and technology, we are known for our outstanding performance in the industry. We constantly upgrade our products to meet the international standards. We hold a team of professionals, which provides on time deliveries with high quality. Our sincerity and hard work has helped us certified ISO 9001 and TS16949 in both Taiwan and China factory to match our quality with international standards.



Specialized in:

- | | |
|---|----------------------------------|
| 1.Connector parts (Military usage RF & R) | 9.Various Industrial Usage parts |
| 2.Aerospace Commercial parts | 10.Bicycle parts |
| 3.Medical Equipment parts | 11.Titanium parts |
| 4.Pneumatic & Hydraulic parts | 12.Hardware parts of cell phone |
| 5.Aim Point parts | 13.Mini plastic parts |
| 6.Shaver & Epilator parts | 14.O-Ring & Plastic Steel parts |
| 7.Automotive machined & turned parts | 15.Assemble service |
| 8.Camera parts | |

Main materials:

Carbon Steel, Stainless Steel, High Speed Steel, Tool Steel, Plastics, Non-ferrous, Brass, Bronze, Aluminum and Titanium.

Secondary treatment:

Grinding, heat treatment, plating, anodizing, sand blasting, ultra sonic cleaning...ect. We are confident that we can satisfy your needs and offer the best service to you!

TAIWAN

No.22, Keji 1st Rd., Tainan City 70955, Taiwan
TEL : +886-6-3841123(REP) FAX : +886-6-3840511
E-MAIL : sales@nnd.com.tw
<http://www.nnd.com.tw/index.asp>

CHINA

C1,Tan-Wei Business Park,Kang-Ming Zhen, Pon-An Area, Shen Zhen,China



SHOWFOU PUMP



SUBMERSIBLE PUMP for DEWATERING

Plastic Utility Pump
100 • 200 • 370 • 680W



GFA-V GF

Large Volume
Dewatering Pump



KS

KL

Contractor Pump
-HCr impeller
-HCr suction cover



SF • SFA (1-3 HP)

Drainage Pump



SCA



SF • SFA (1/2, 1/3 HP)



SF • SFA (1-3 HP)

SUBMERSIBLE PUMP for CLEAN WATER

Highhead Pump



SH

SHA

Underground Water Pump



KSW

THREE LOBES ROOTS BLOWER

RLC

(Complete pressure package system)



SIDE CHANNEL BLOWER



BS (Ring Blower)



BP

(Turbo Blower)

SUBMERSIBLE PUMP for SEWAGE

Plastic Vortex Pump
200 • 370 • 680W



GVA-V GV GVA

Sewage Pump
Sewage Cutter Pump



STO/STO-C
AUTO-SETTER
TYPE

FO/FO-C
FLOOR
MOUNT TYPE

Sewage Pump



SS

SSA



SST

STA

(SiC seal version)

Vortex Pump



SSM

SMA

Grinder Pump



GP

Stainless Grinder Pump



GPO

SUBMERSIBLE STAINLESS DRAINAGE PUMP (SCS13)



SQ



KHQ



CENTRIFUGAL STAINLESS SURFACE PUMP (SCS13 & SCS14)



(Open impeller design)

SUBMERSIBLE STAINLESS SEWAGE PUMP (SCS13)



SSQ

CHEMICAL PUMP in FRPP and PVDF construction

SELF-PRIMING CHEMICAL PUMP

PD (FRPP)



PL-F (PVDF)



DRY FREE VERTICAL SEALLESS PUMP CHEMICAL PUMP



PE (FRPP)



PE-F (PVDF)



PEB (FRPP)

Flange Type

SUPER Electronic Constant Pressure Pump
...with micro-processor equipped pump controller



UB

CENTRIFUGAL SURFACE PUMP

Cascade Pump



GMA Compact Booster unit



GO

SP Turbine Pump



SPM Multi-Stage Turbine Pump



CV Volute Pump (For cooling tower)



MCP Volute Pump (For irrigation)



2 • 3 HP



1 HP



1 1/2 HP





Watercraft Safety Equipment (Deck Hardware, Towing Equipment, Winches, Jacks, etc.)

■ U Report Section

ENAMAX TECHNOLOGY CO., LTD.

■ Recommended Advertisers

A-BELT-LIN INDUSTRIAL CO., LTD.

ENAMAX's Multi-purpose Ceramic Putty is Eco-friendly Alternative to Welding Repair of Metal Parts and Piping

Repairing cracks and leakages in metallic and nonmetallic materials as piping by welding typically calls for formally-trained, certified personnel at higher cost in wages and equipment, and also involves time-consuming, hazardous work that results in pollution, as well as potential damage to original material via poor workmanship and compromised material quality, integrity due to incompatible welds. To help engineers, tradesmen overcome such a problem when repairing metal parts and piping in safe, efficient, environmentally-friendly way, ENAMAX Technology Co., Ltd., a developer and manufacturer of industrial sealants in Taiwan, promotes the ENA-1288 multi-purpose ceramic putty noted for eco-friendly formula and strong adhesion.

The ceramic putty is made with a special formula without heavy metal particles, organic bromine compounds and other toxic substances. Accordingly, this product measures up to the requirements of 2002/95EC RoHS (as tested by SGS and documented in the report CE/2010/B4232).

A key feature of this ceramic putty is excellent adhesion, coupled with versatility to make this product very useful as sealant and adhesive. This product can be applied to valves, pipes and other parts of various materials, including rigid PVC plastic, metals and ceramic. Once spread over cracks or leaking holes, the putty hardens naturally within 1-1.5 hours under normal room temperature, with its ceramic content enabling curing into a super-hard sealant to firmly adhere to surfaces of any direction without need for clamping or jigs. The putty is also a strong adhesive, being resistant to oxidation, and

this sector across the global market within only a couple of years.

With leading production techniques and extensive know-how of sealant formulation, this company capably turns out not just the ENA-1288 multi-purpose ceramic putty, but also ENAMAX® Hot Melt Welding Adhesive, Deluxe Ceramic Repair Putty, Super Duct Aluminum Adhesive, Super Thread Sealant, all of which are remarkable for quality, high adhesion, flexibility and meeting RoHS requirements.

The company's products are marketed under its brand "ENAMAX," and proven popular with professional users all over the world.

particularly thermal expansion and contraction, as well as shock, bending, FREON, acidity, alkalinity and corrosion.

The ceramic putty comes in several optional packaging for wholesale and retail, and can be used with ENAMAX ENA-1365 and ENA-1366 fiberglass-reinforced belt for enhanced anti-leakage effect, with a shelf life of 3 years under room temperature of 25°C .

With outstanding quality and long shelf-life coupled with a 5-year quality guarantee, this product is widely recognized by professionals as an efficient, economical and eco-friendly alternative to welding for repairing defects and cracks on metal and ceramic parts and pipes, being extensively used in electronic, semiconductor, optoelectronic, petrochemical, machinery, pipe fitting, air conditioner, hardware and bathroom fitting industries.

ENAMAX

Aspiring to provide the best industrial sealants and adhesives using Nano technology, ENAMAX, founded in 2006 in Taiwan's central city of Taichung, has built a distinct profile as a specialized supplier in



Caption: Enamax's ENA-1288 multi-purpose ceramic putty features strong adhesion and eco-friendly formula, hence widely accepted by industrial users worldwide.

ENAMAX TECHNOLOGY CO., LTD.
No. 27-19, Hengkeng Lane, Tungshan Borough,
Peitun Dist., Taichung City, Taiwan 406
Tel: 886-4-2439-1397 Fax: 886-4-2439-1352
E-Mail: info@enamax.com.tw
<http://www.enamax.com.tw>
<http://www.cens.com/enamax>

LET'S DO IT

ECE, CE, FIA,
SFI, CNS,
FMVSS209,
FMVSS302

Products:

Racing Safety Belt
Seat Belt
Industrial Safety Belt
& Harnesses
Medical Belt
Window Net
Tow Ropes & Straps
Lifting Slings
Tie Downs
Hardware
Seat Belt Buckles
Car Accessories



Abelt.c

一嵩工業股份有限公司
A-Belt-Lin Industrial Co., Ltd.

No. 63, Ping-an Rd., Ansi Village, Sioushuei
Township, Changhua County, Taiwan 504
TEL: 886-4-768-3100 FAX: 886-4-768-3940
E-mail: arthur.taiwan@abeltc.com
E-mail: abeltc@ms32.hinet.net
http://www.abeltc.com

一嵩五金織品有限公司
A-Belt-Lin Weavings & Metals Co., Ltd.

Dasha Management Area Dalingshan Town
Dongguan City Guangdong China
China Branch:
TEL: 86-769-8563-4715 FAX: 86-769-8563-4714
E-mail: arthur.china@abeltc.com
E-mail: webmaster@abeltc.com





Bathroom Fittings (Including Washbasins, Bathtubs, Mirrors, and Toilets)

■ Recommended Advertisers

UNIPLUMBG ENTERPRISE CO., LTD.

■ Advertiser Index

THE POSEER ENTERPRISE CO., LTD.

*If it is a
plumbing part,
we have it!
If it is a dream,
we make it real!*



Uniplumbg Enterprise Co., Ltd.

10F., NO. 20, LANE 95, SEC.3, JIN-MA RD., CHANG HUA ZIP500, TAIWAN

Tel: 886-4-728-0491 Fax: 886-4-727-0080

E-mail: TeamV@upetwn.com <http://www.upetwn.com>

THE POSEER ENTERPRISE CO., LTD. / We specialize in Infrared Sensor Products, Which Include Automatic Faucet, Urinal Flusher



AUTOMATIC

SANITARY FITTINGS



T-818M



T-918



T-718



T-715A



T-618



T-615C



A-841



T-719A



T-616



HK-1800PA



HK-2400PA



T-819-1



THE POSEER ENTERPRISE CO., LTD.

NO. 33-9, ALLEY 33, LANE 58, GONGYEQU 1ST ROAD,
TAICHUNG 40767, TAIWAN

TEL: 886-4-23320207, 886-4-23591568 FAX: 886-4-23592866

E-mail: poseer@gmail.com

<http://www.poseer.com>

<http://www.cens.com/theposeer>



Furniture and Building Hardware (Locks Included)

■ Recommended Advertisers

INCOMING INC.

TAI CHEER INDUSTRIAL CO., LTD.

TANG YI INDUSTRIAL CO., LTD.

The Security Product Specialist

Wafer Tumbler Lock, Pin Tumbler Lock

We have BRIGHT Ideas!



INCOMING INC.

incoming@ms15.hinet.net www.cens.com/incoming
Tel: 886-4-762-3181 Fax: 886-4-762-9379
123 Ping-An Road, Siou Shuei, Changhua, Taiwan 50447



Tai Cheer Industrial Co., Ltd.

Ball bearing drawer slides

Established in 1985, Tai Cheer Industrial Co. initially generated ball-bearing slide roll forming machines, and in 1993 became in the production of ball bearing drawer slides. With experience in the industry for more than 25 years, the company is now able to offer high-end quality products to its clients.

Today, Tai Cheer has three manufacturing plants in central Taiwan, with two located in Huwei and Tuku township of Yunlin County and one in Puhsin of Changhua County. The company supplies slide loading light-duty, medium-duty and heavy-duty ball bearing drawer slides, all available in two types – full extension and 3/4 extension, mainly for furniture items, OA furniture, toll carts, refrigerators, and medical equipment.

Tai Cheer has been ISO 9001: 2008 certified and its plants have a total of 100 production lines, turning out quality products to meet the demand of customers. The consistent product quality and punctual delivery has been highly recognized by many renowned furniture manufacturers in Europe and the United States.

The company supplies its products mainly on an OEM, ODM, or OBM basis, and welcomes special orders with special customer specifications.



Medium-duty Drawer Slides



Heavy-duty Drawer Slides



Tai Cheer Industrial Co., Ltd.

196 Hsinchuang Li, Tuku Town, Yunlin Hsien, Taiwan 633

Tel: 886-5-665-4716 Fax: 886-5-665-4717

E-mail: taicheer@ms41.hinet.net

Website: www.proslide.com.tw



ISO 9001:2008

Full vision showcases, aluminum showcases, cashier desks, corner cabinets

Founded in 1988, Tang Yi Industrial Co., Ltd. is a professional builders' hardware manufacturer branching into production of various showcases and cabinets.

Following decades of hard work, the company has successfully built positive business links with customers in the U.S., mostly thanks to its dedication to continuous improvement of quality. To secure sustainable development, the supplier is actively engaged in R&D to satisfy customers from different sectors as well.



The company's current product category encompasses full and half vision showcases, jewelry showcases, cashier desks, display racks, aluminum showcases, and various corner cabinets, all of which are knock-down and suitable for wide-ranging applications, with monthly output of more than 1,000 units. In addition, the manufacturer is also able to turn out tens of thousands of units of various fittings, LED pointers, and latches for displays per month.

Tang Yi Industrial Co., Ltd.

No. 20, Alley 52, Lane 247, Lucao Rd., Sec. 2,
Lukang Township, Changhua County 505, Taiwan
Tel: 886-4-776-5718 Fax: 886-4-776-6706

Email: royko_yen@yahoo.com.tw

Website: www.tang-yi.com.tw





Household Hardware (Household Products and Small Electrical Home Appliances Included)

■ Recommended Advertisers

CHEIN YING ENT. CO., LTD.

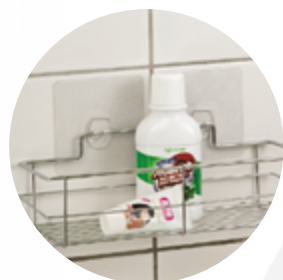
CHIN YI ENTERPRISE CORP.

Chein Ying Ent. Co. Ltd.

Self-sticky hooks, pens, office supplies, stationery, novelties, plastic tableware and kitchenware, various handbags and totes

SGS Inspection No.cy/2011/61194

Patent No.M397762



CYM-10408



CYM-10401



CYM-10402

CYM-10403



CYM-10404

CYM-10405



CYM-10406

CYM-10407



CYM-10424



CYM-10425



CYM-10426



CYM-10427

CYM-10428



CYM-10429



CYM-10430



CYM-10432



CYM-10433



CYM-10436



Established in 1981 in New Taipei City, northern Taiwan, Chein Ying Ent. Co., Ltd., a specialized and seasoned manufacturer of stationery, continues to promote innovative, convenient-to-use self-adhesive hooks to meet robust demand for fastening solutions that help storage, organization in home, commercial settings when many users prioritize cost-efficiency.

This hook is made of high grade plastic backed with a square, self-adhesive foam for easy fixing and comes in transparent color. The specially-formulated adhesive enables easy mounting on various non-porous surfaces as painted masonry, tiling, smooth wood or glass, with each hook able to carry around 2.5 kilograms or more, and can be repeatedly used without damaging wall or using a drill.

For enhanced marketability and to meet consumer demand for personalized designs and aesthetics, the product can be customized with motifs,

patterns and colors. It is patented in Taiwan for improved structural strength and innovative designs.

In addition to the hook, the R&D-driven maker also offers office supplies, novelties, plastic tableware and kitchenware, handbags, school bags, sports bags, and leisure bags, among other items.

Chein Ying regularly attends international exhibitions and exports 70 percent of its output, mainly to Europe, the U.S., and Japan. It has built solid reputation for high quality and on-time delivery, and offers OEM/ODM services as an all-round supplier. Buyers are welcome to send shop drawings and ideas on which to base development of new, creative products. (SC)

Chein Ying Ent. Co., Ltd.

No. 17-1, Lane 778, Huacheng Rd., Xinzhuang Dist.,
New Taipei City, Taiwan 24253

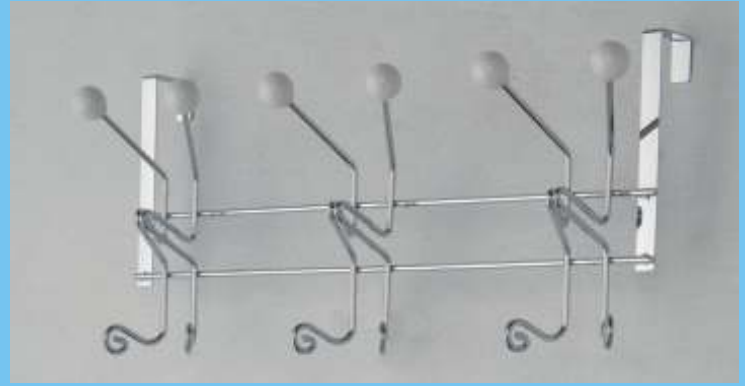
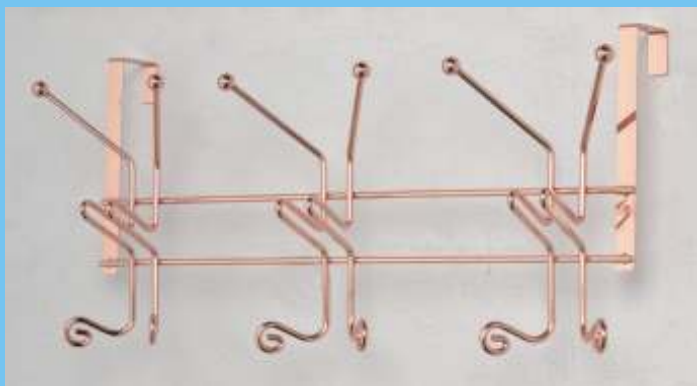
Tel: 886-2-8521-1870 Fax: 886-2-8521-3827

E-mail: chien.ying@msa.hinet.net

Metallic Wire Forms



With about a decade's experience in processing/making versatile springs & wire forms, we look to offer more products via production integration. By offering made-to-order products precisely meeting requirements, we can always reach business objectives and establish win-win business relationship with customers. Equipped with CNC spring/wire-form processing machinery (capacity 0.2~12.0mm dia.), we make wide-ranging metallic items including kitchenware, gardening tools, fruit baskets, towel racks, corner racks, over-the-door hooks, clothes hangers, IV stands, hanging wire meshes/baskets for supermarkets etc.



CHIN YI ENTERPRISE CORP.

123-27 Fanchin Rd., Yungping Village, Puyen Township,
Changhua County, Taiwan 516

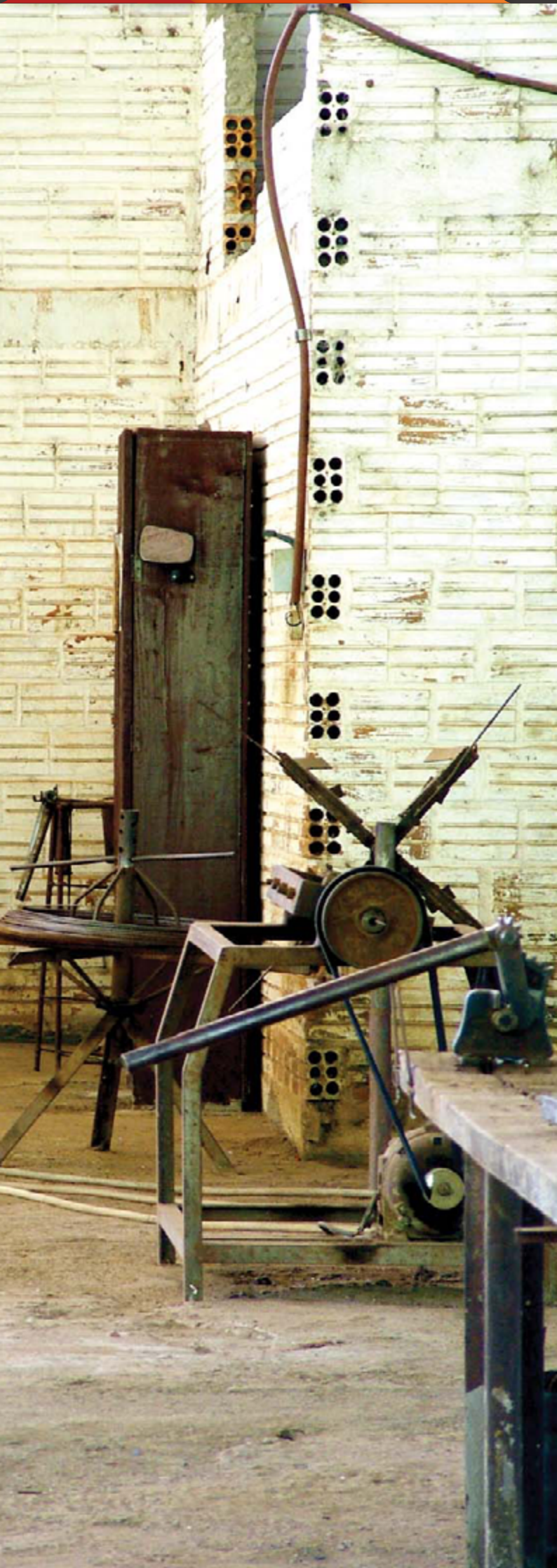
TEL:886-4-8658418

FAX:886-4-8658419

E-mail:qm2072.n18@msa.hinet.net

www.door-hook.com





Screws & Bolts

■ Recommended Advertisers

DEFA INTERNATIONAL INC.

YEUN CHANG HARDWARE TOOL CO., LTD.



Processed with combination tool & Swiss type high-precision CNC lathe

- Bicycle parts
- Connectors for telecommunication
- Connectors for electrical appliances
- Performance & customizing parts & accessories for autos & motorcycles
- Auto parts & accessories
- Handtool parts & accessories
- Electronic parts
- Precision hardware parts and accessories



DEFA INTERNATIONAL INC.

1F., No. 6-1, Zhongli Ln., Dali Rd., Dali Dist.,

Taichung City, Taiwan 41259

TEL: 886-4-2407-6816

FAX: 886-4-2407-6815

E-MAIL: info@defatools.com

www.cens.com/defa

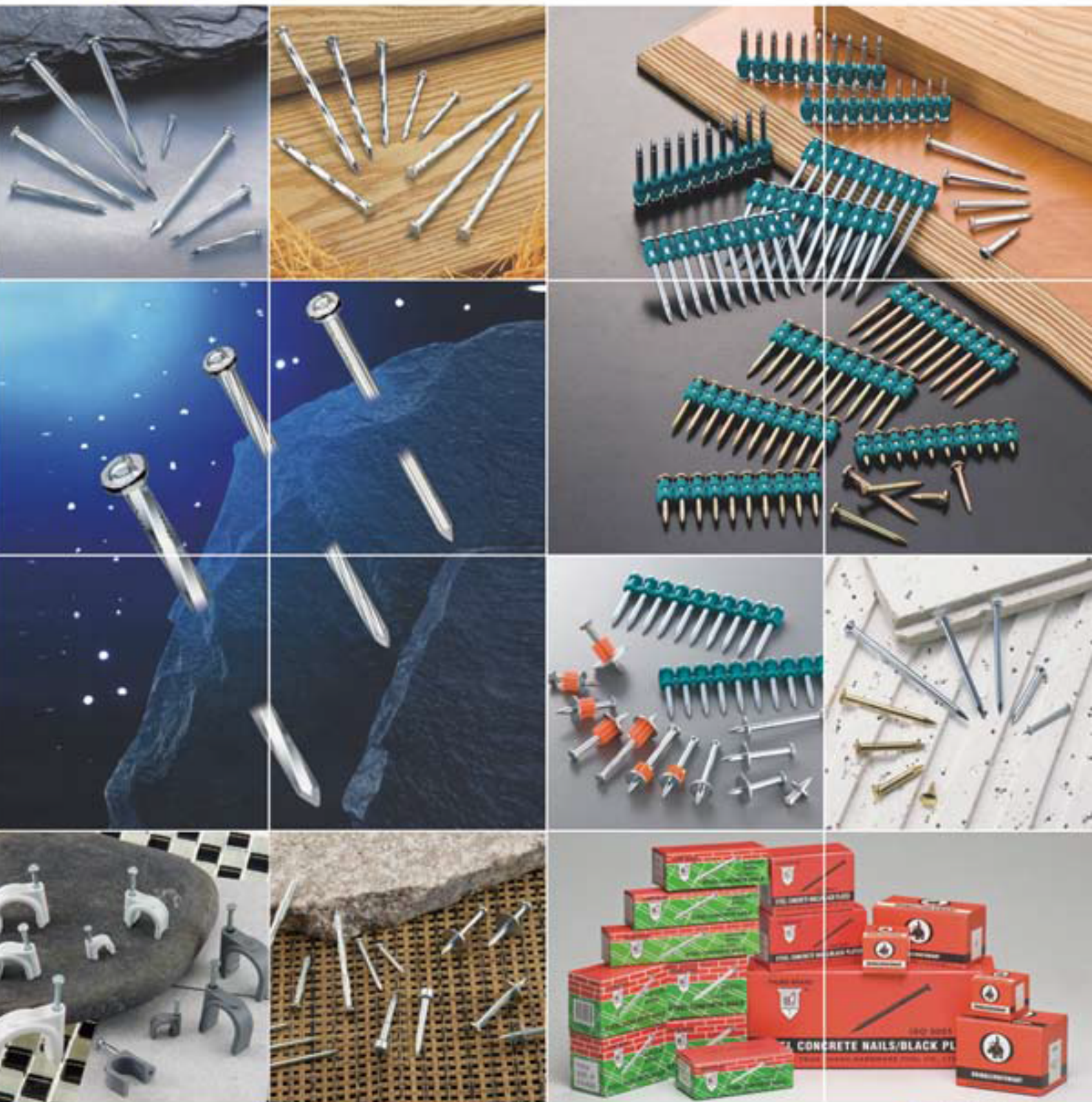
www.defatools.com/

THUMB BRAND



ISO 9001

YEUN CHANG
 HARDWARE TOOL CO., LTD.

**Quality
Professional**
Since 1981
STEEL CONCRETE NAIL & FASTENER


No.16, Kungye E. 2nd Rd., Lukang Town, Changhua Hsien, Taiwan 505

Tel: 886-4-752-6921 Fax: 886-4-761-1000

E-mail: yeun.chang@ycnail.com thumbnail@ycnail.com

<http://www.ycnail.com> <http://www.ycnail.com.tw>




Japanese



Russian



Spanish



Portuguese



German



Arabic



Chinese



French

See more by
other language



CENS Global Pass, the Newest Sourcing Tool

e-Age

Product Sourcing for Global Buyers

9 languages for global accessibility



Source in your own language
Less work but more productivity

CENS.com
buyerservice@cens.com



Scan for iPad & iPad mini